



FLORIDA DISTRICT POSTSECONDARY CAREER, TECHNICAL AND ADULT EDUCATION 2022-2023 SUMMARY

DISTRIBUTION OF PROGRAMS

56

Districts with
Career, Technical and
Adult Education
programs

55

Districts with adult general education programs.

45

Career Centers (COE Accredited Institutions).

40

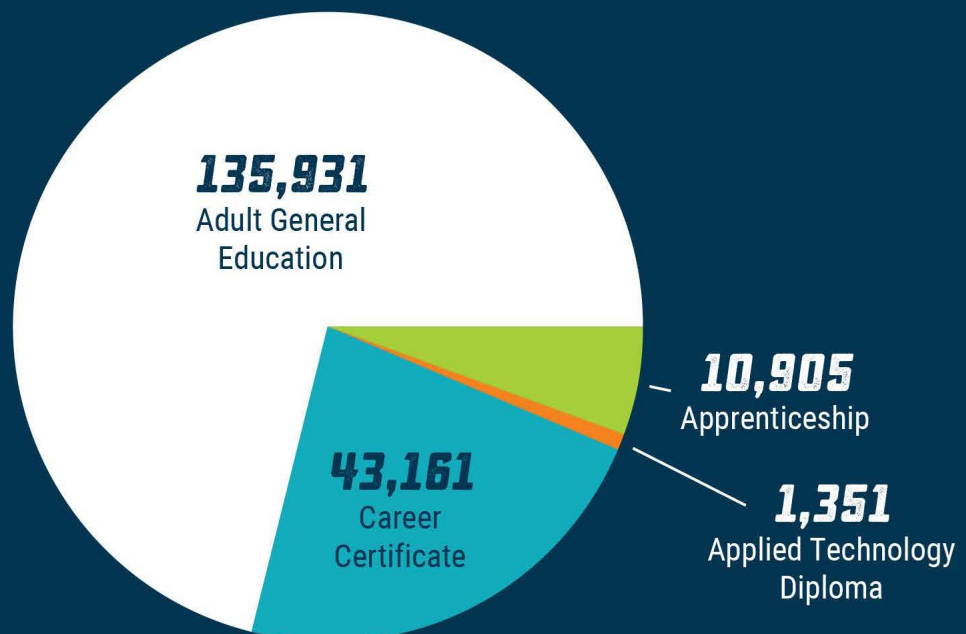
Districts with career certificate programs.

20

Districts with apprenticeship programs.

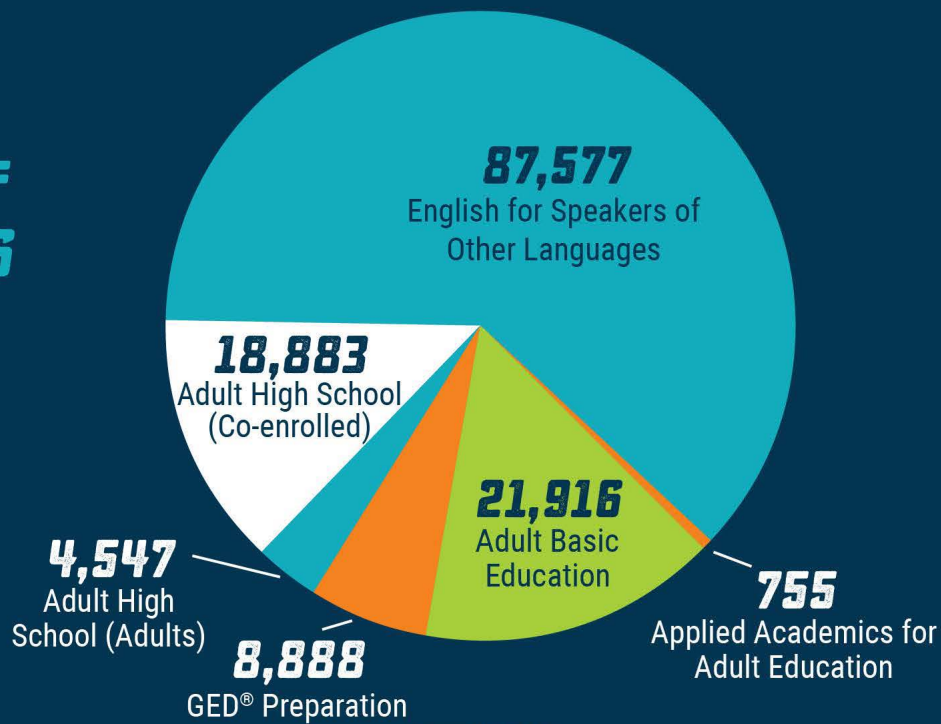
STATEWIDE DISTRICT CAREER, TECHNICAL AND ADULT EDUCATION HEADCOUNT

**TOTAL =
191,348**



DISTRICT ADULT GENERAL EDUCATION ENROLLMENT BY PROGRAM¹

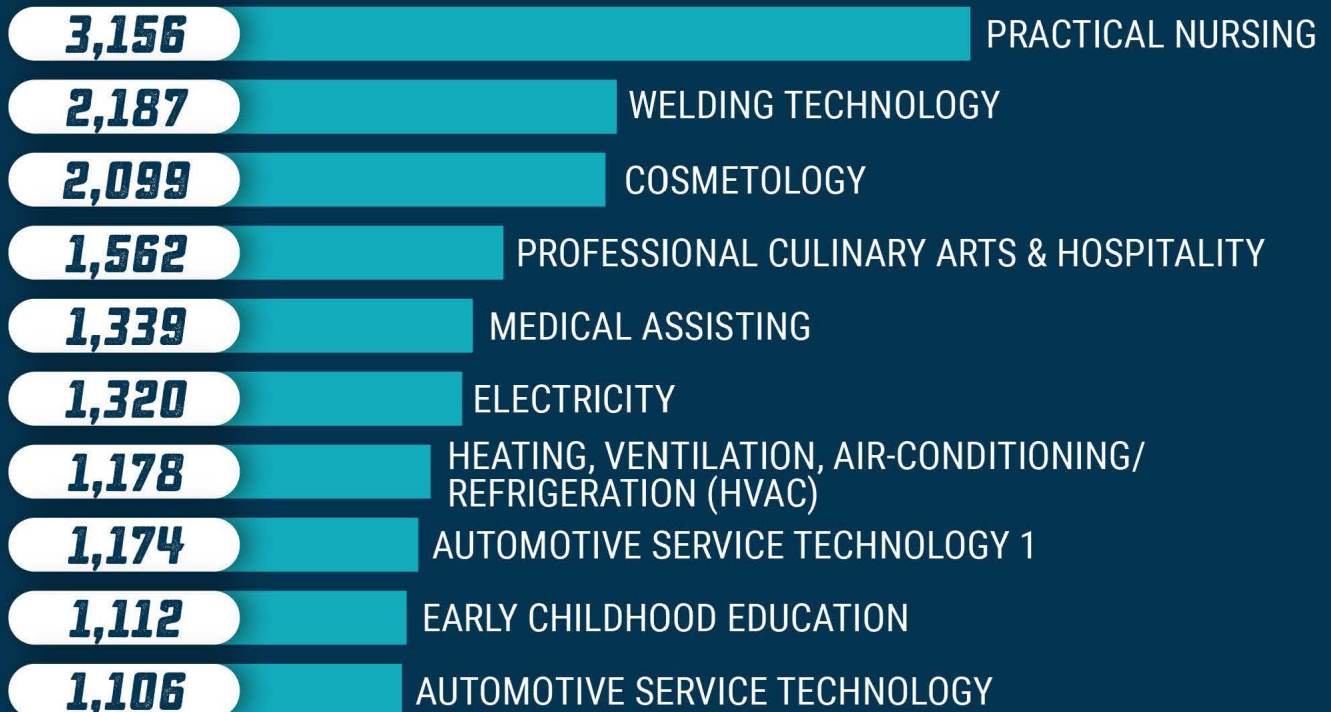
**TOTAL =
142,566**



Source: FLDOE data

¹Students may have been enrolled in more than one program. Because of the duplication, the total enrollment in this chart is larger than the adult general education enrollment in the previous chart.

TOP TEN DISTRICT POSTSECONDARY CAREER AND TECHNICAL EDUCATION PROGRAM ENROLLMENTS



Source: FLDOE data

DISTRICT POSTSECONDARY CAREER AND TECHNICAL EDUCATION COMPLETIONS

60,524

Occupational Completion Points

27,241

Terminal Occupational Completion Points²

17,499

Program Completers³

Source: FLDOE data

²Terminal Occupational Completion Points are exit points in a program from which students may exit with skills sufficient to prepare them for a specific occupation.
³Program completers are students who have completed all of the Occupational Completion Points in a certificate program and met applicable basic skills requirements.

ADULT GENERAL EDUCATION LEARNING GAINS AND DIPLOMAS

ADULT GENERAL EDUCATION PROGRAM AREA	LEARNING GAINS (LITERACY COMPLETION POINTS)
ADULT BASIC EDUCATION	6,906
ADULT HIGH SCHOOL	8,365
HIGH SCHOOL EQUIVALENCY DIPLOMA – GED®	6,500
ENGLISH FOR SPEAKERS OF OTHER LANGUAGES	53,150
TOTAL	74,921

Source: FLDOE data

SEX AND RACE/ETHNICITY DISTRIBUTION BY DISTRICT CAREER, TECHNICAL AND ADULT EDUCATION PROGRAM AREA

DISTRICT WORKFORCE EDUCATION PROGRAM AREA	SEX		RACE/ETHNICITY						
	FEMALE	MALE	AFRICAN AMERICAN	AMERICAN INDIAN	ASIAN	HISPANIC	PACIFIC ISLANDER	WHITE	TWO OR MORE
ADULT GENERAL EDUCATION	55.5%	44.5%	22.8%	<1%	1.3%	58.5%	<1%	15.9%	1.1%
CAREER CERTIFICATE & APPLIED TECHNOLOGY DIPLOMA	45.0%	55.0%	26.7%	<1%	2.0%	34.0%	<1%	34.4%	2.4%
APPRENTICESHIP	8.5%	91.5%	17.6%	<1%	<1%	24.7%	<1%	54.6%	1.5%

Source: FLDOE data

EMPLOYMENT OUTCOMES

\$44,738

Estimated initial fulltime annual earnings of a 2020-21 district certificate terminal OCP earner.

55%

of district certificate completers in 2020-21 were employed in fall 2021.

FALL 2021 AVERAGE INITIAL EARNINGS OF DISTRICT CAREER CERTIFICATE EARNERS IN SELECT OCCUPATIONS WITH STATEWIDE DEMAND



Source: Florida Education & Training Placement Information Program Outcomes Reports