

# Adult Education Quarterly Webinar

**GET THERE**

Florida's Workforce Education Initiative

March 16, 2022

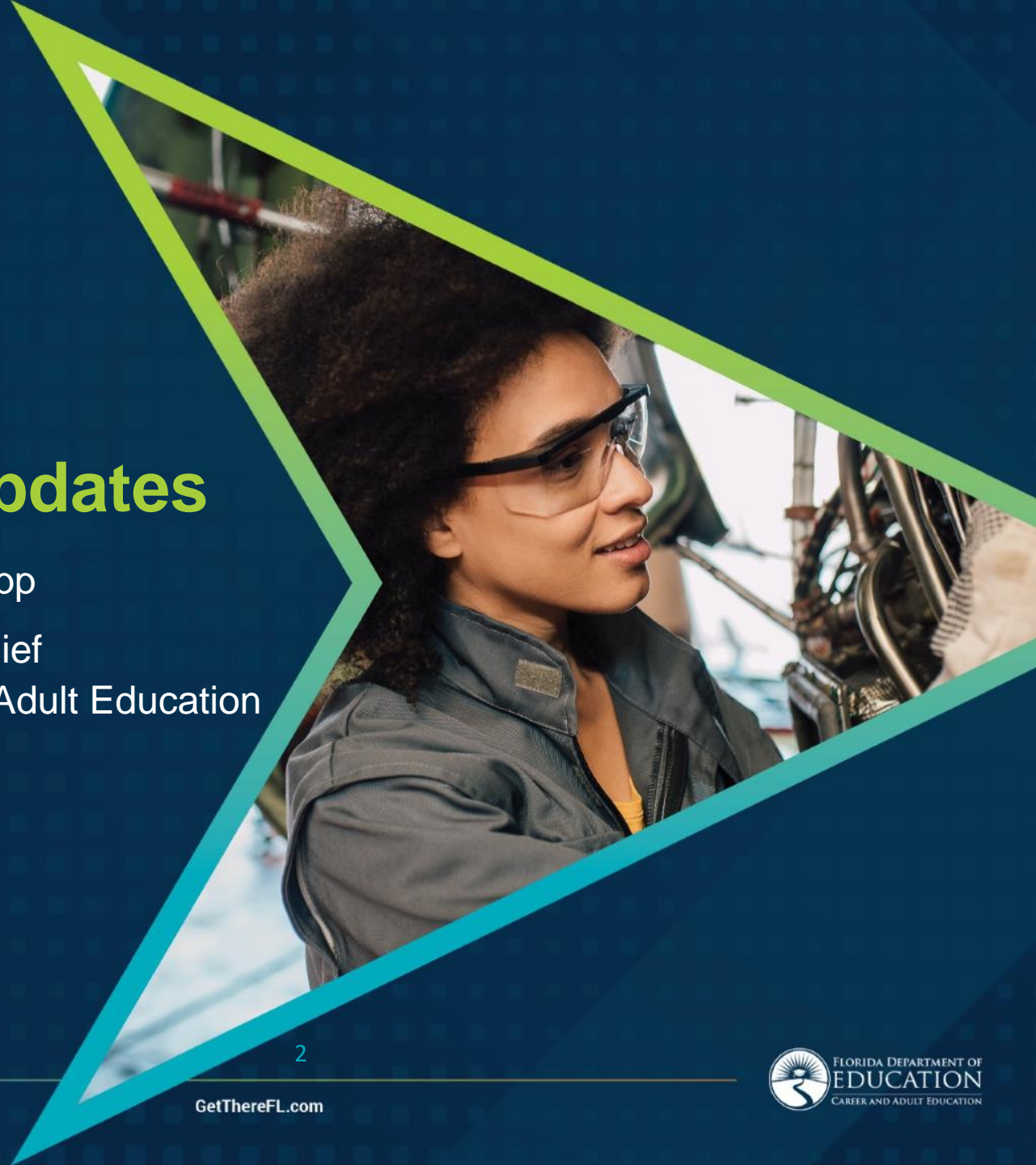


# Program Updates

Ashley Yopp

Bureau Chief

Division of Career and Adult Education



# Adult Education Regional Partnerships

FDOE will move toward a regional partner development model for federal WIOA-AEFLA funds in the 2023-2024 fiscal year.

- All eligible providers will work together, within defined geographic regions, to develop collaborative proposals.
- FDOE will coordinate regional institutes and provide additional funding for provider participation.

# Adult Education Regional Partnerships

- A national consultant has been selected to facilitate regional institutes under the coordination of IPDAE.
- Six regional institutes will take place around the state in Fall of 2022.
- Eligible providers will be given a supplemental allocation to fund all necessary activities related to developing regional partnerships. Providers will be expected to participate fully and work with local CareerSource boards and community partners.



# Professional Development Update

Rachel Ludwig

Director of Professional Development and Provider Performance

Division of Career and Adult Education

# Professional Development Updates

- Welcome to Ashley Olevitch!
- Advisory Groups for 2022-2023
- Career Navigator Training
  - Individual meetings with providers are underway with Mathematica to determine eligibility
- Canvas Contract through IPDAE for 2022-2023

# Upcoming Adult Education Professional Development

- ACE Leadership Training
- IPDAE Wednesday Webinars
- ACE Part-time Teacher Academies
- IPDAE IET Assistance Training
- ACE ESOL Trainer of Trainers
- IPDAE Corrections Training
- FLC Ed Tech Maker Space
- ACE IET Showcase (April 6th-8th)
- COABE National Conference (April 9th-13th)
- IPDAE Career Pathways Institute (May 5<sup>th</sup>-6<sup>th</sup>)
- Florida Literacy Conference (April 27<sup>th</sup>-29<sup>th</sup>)
- FLC Small Business Development for Adult Learners Webinar
- ACE Adults with Disabilities Training
- IPDAE Online Learning Instructional Practices Cohort
- ACE Summer Symposium (June 6<sup>th</sup>-7<sup>th</sup>)

# Curriculum Frameworks

- New Adult Education curriculum frameworks aligned to Florida's B.E.S.T. standards are posted in DRAFT form on the FDOE website for review by the field.
- Adult Education curriculum frameworks will be presented for approval during the March 31<sup>st</sup> Board meeting.

## Notable Proposed Changes:

- ABE Reading and Language frameworks have been combined to form ABE Reasoning through Language Arts (RLA) course.
- New Employability Skills framework
- A separate webinar is scheduled for April 5th at 3:00pm to discuss curriculum framework changes in detail.



# Integrated Education and Training (IET)

- As part of the continuation year, providers are required to submit one additional IET Program of Study plan for each funding stream.
  - Providers will have the opportunity to submit a justification to waive this requirement.
  - If interested in the **IET waiver**, please email Ashley Olevitch ([ashley.olevitch@fldoe.org](mailto:ashley.olevitch@fldoe.org)).
- Note: If you already have two approved IET programs (for each funding stream), you are not required to submit an additional IET.
  - Please include the name of the approved IET programs in the workbook of your application.

# Integrated Education and Training (IET)

## Submission of a New IET Program:

Must use the IET Program of Study Template Form

### **Step 2: Shared Learning Objectives Template**

Include the specific Adult Education standards from the FDOE Curriculum Frameworks.

- Include specific English Language Proficiency standards for IELCE grants.

### **Step 4: Identify the Credentials of Value (COV)**

- Include the Industry Certification name, Post-secondary course name and codes that a student could complete or enroll in during the IET program.

# Adult ESOL Updates

Philip Anderson  
Adult ESOL Programs  
Division of Career and Adult  
Education



# 2022-2023 Adult ESOL Curriculum Frameworks

- **Adult ESOL Course #9900040**
- **NEW:** The Florida **Benchmarks for Excellent Student Thinking (B.E.S.T.)** Standards for Adult Education
- **SAME:** The **English Language Proficiency (ELP)** Standards for Adult ESOL
- **SAME:** The **Life and Work Competencies**
- Posted on FDOE website now
- Take effect July 1, 2022
- Trainings will be provided for instructors

# 2022-2023 ELCATE Curriculum Frameworks

- **English Literacy for Career and Technical Education (ELCATE) Course #9900050**
- **NEW:** The Florida **Benchmarks for Excellent Student Thinking (B.E.S.T.)** Standards for Adult Education
- **SAME:** The **English Language Proficiency (ELP)** Standards for Adult ESOL
- **SAME:** The **Civics Standards**
- Posted on FDOE website now
- Take effect July 1, 2022
- Trainings will be provided for instructors



# Other 2022-2023 ESOL Curriculum Frameworks

- **Adult ESOL College and Career Readiness (CCR) Course #9900051**
- **Adult ESOL Literacy Skills Course #9900300**
- Both courses **SAME** as last year
- Both courses are reportable to Florida DOE only and are not included in the federal National Reporting System (NRS) reports
- Posted on FDOE website now
- Take effect July 1, 2022
- Trainings will be provided for instructors

# Assessment Resource for ABE and ESOL

- The Florida DOE **Policies on the Use of CASAS Assessments** document is on the FDOE Adult Education web page under the link "Assessment Resources"
- This paper provides information on:
  - Training Requirements
  - Approved tests for both ABE and ESOL
  - Score Ranges for ABE and ESOL
  - Policies on Out-of-Range Scores
  - Policies on Exemptions to Testing at less than Publisher-Recommended Instructional Hours

# Assessment Updates

Lisa Williams

Program Specialist

Division of Career and Adult  
Education



# Reports and Data

- TABE 11/12 and CLAS-E both have PDF reports and CSV (Excel) data files with corresponding data
- On-Demand and nightly transfer data files available within the TABE Portal
- TABE 11/12 Individual Profile Reports include “Strength and Weakness” skills on page 2 and 3 and on the nightly data files
- CLAS-E Skills and Weakness are being added to the Nightly Data file in early March and on the PDF Individual report by early May.
- The Data File of the Skill Strengths and Weaknesses template is being shared with curriculum vendors to align lesson plans for digital learning.

# TABE Workforce Readiness Portal

The new TABE Workforce reporting portal will add access to the Department of Labor's Occupational Network (O\*NET) jobs database in Spring 2022. TABE users will have the option to use their TABE score to leverage information from O\*NET in DRC's Interactive Reporting system. This access will provide the TABE testing data to help inform their career paths and goals.



# TABE Workforce Readiness Portal Con't

- Planned for early 2022
- Partnership with MetaMetrics to align TABE Reading and Math scores to Lexile and Quantile Scores
- Aligning the Reading and Math requirements of over 550 jobs listed on the US Dept of Labor's O\*Net site to TABE Skills
- Assist in understanding a candidate's readiness to succeed in that specific career
- Provides new normed data for Grade Levels related to Scale Scores

# TABE Off-Line

- Now available
- A fully offline and secure testing experience for correctional education or programs with limited bandwidth
- Easy to use for TABE administrators
- Easy to use for students with little or no experience testing on computers
- Pilot started in February with Texas Corrections 12 of 92 locations started initially – 97% reduction in administrative staff time over paper testing all 92 sites plan to be rolled out by early 2022.
- Utilizes TABE Online Portal for Administrative Registration
- Students Test on non-internet connected computers
- Responses are uploaded to TABE Portal for Scoring and Reporting

# Contacts

Lisa Williams  
Division of Career and Adult Education  
850-245-7884  
[Lisa.Williams@fldoe.org](mailto:Lisa.Williams@fldoe.org)

Christine Kirk  
Florida TABE Assessment Consultant  
904-864-0688  
[Ckirk@datarecognitioncorp.com](mailto:Ckirk@datarecognitioncorp.com)

Mike Johnson  
National Adult Education Director - TABE  
630-995-6712  
[mjohnson@datarecognitioncorp.com](mailto:mjohnson@datarecognitioncorp.com)

# GED Testing Update

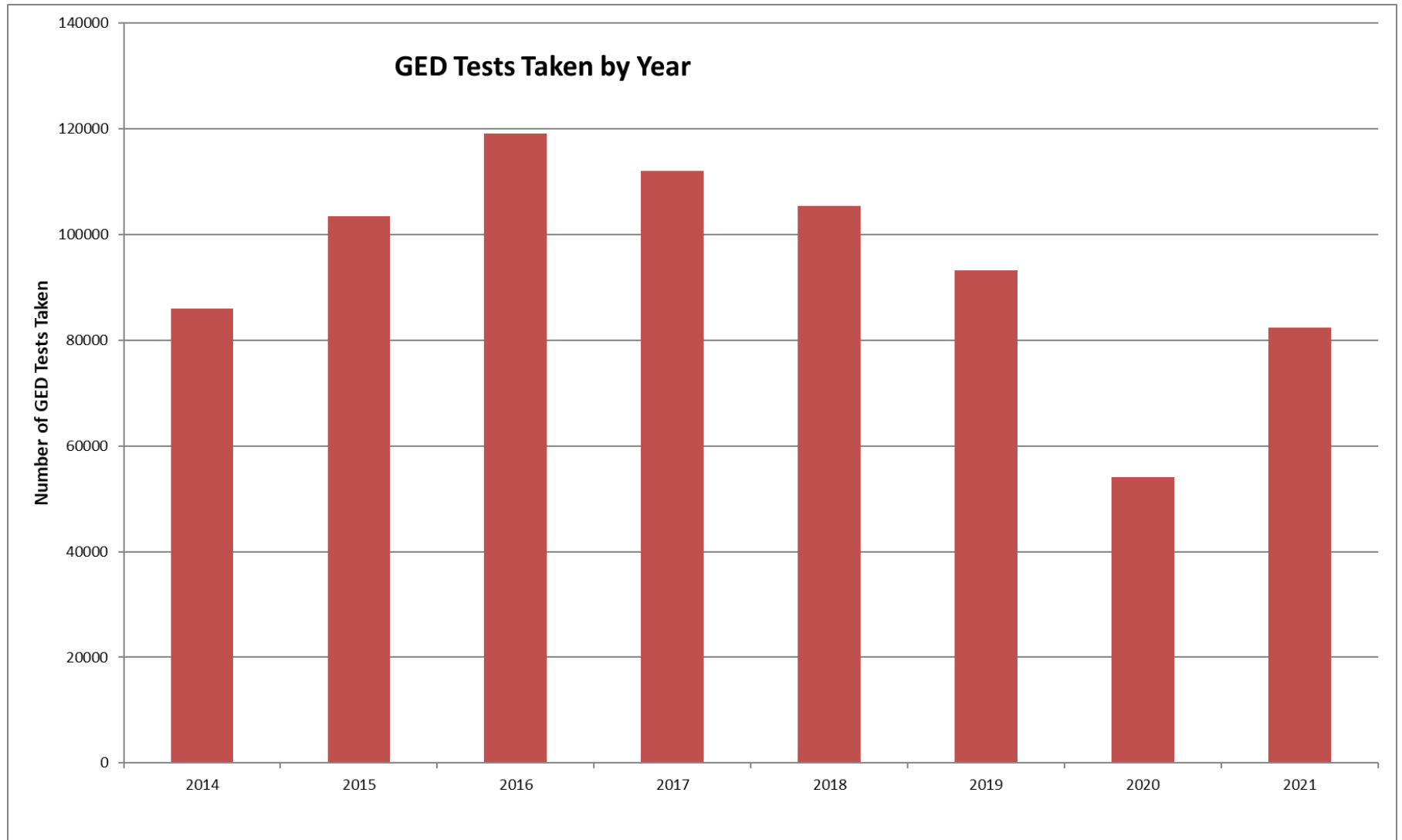
Diane Vaccari

H.S. Equivalency Diploma Program Manager  
Division of Career and Adult Education

[Diane.Vaccari@fldoe.org](mailto:Diane.Vaccari@fldoe.org)



# GED Testing Volume





# GED Testing - Vouchers

- GED® Testing/Pearson VUE vouchers are good for one year, so make sure to plan accordingly to only purchase what you will actually use in that time period. Here are a few tips to keep in mind:
  - Prior to ordering vouchers, plan out the number you will actually be able to use before they expire.
  - Monitor your inventory of current vouchers.
  - Have a plan in place for using your vouchers based on the expiration dates.
  - If you know you will be unable to use all of your vouchers by the expiration dates, contact us 4-6 weeks prior to expiration so that we can try to get them extended and/or reissued. (This is a last resort – plan accordingly to use your vouchers by the expiration date.)
- For more information about GED® Testing payment options, including vouchers, visit: <https://wsr.pearsonvue.com/vouchers/pricelist/ged.asp>

# Voucher Purchasing Upcoming Changes

- Improved processes through the Voucher Store to extend/replace vouchers quicker
- In process of moving test vouchers to Marketplace
- If purchasing vouchers with credit card, Marketplace is quicker and easier
- In-person test vouchers and Online Proctored test vouchers are sold separately

# GED Direct – GED Manager

- Buy GED Ready Tests through GED Manager with Check, ACH (Automated Clearing House), or Line of Credit
- All accounts, even sub-accounts can see the option for GED Direct
- Only accounts or subaccounts with access to students will be able to assign Ready tests from their purchased tests.
- <https://ged.com/wp-content/uploads/GED-Ready-Direct-FAQs.pdf>

# GED® Testing Questions?

- Email [flgedhelp@fldoe.org](mailto:flgedhelp@fldoe.org)
- Phone (850) 245-0449
- Phone toll free in Florida (877) 352-4331
- When calling, press “0” to reach a customer service representative and bypass the recording

# Data Reporting

Brittany C. Ross

Director of Research and Evaluation

Division of Career and Adult Education



# 2021-22 Data Reporting Schedule – Workforce Development Information System (WDIS)

Survey	Submission Period OPENS	Required Load Date	Submission Period CLOSES
Survey F/G	August 23, 2021	<b>September 2, 2021</b>	September 16, 2021
Survey W/X	January 3, 2022	February 3, 2022	February 24, 2022
Survey S	June 6, 2022	June 30, 2022	July 7, 2022
Survey S Update Window	July 11, 2022	n/a	July 28, 2022

# 2021-22 Data Reporting Schedule - Colleges

Reporting Window	Submission Period Start Date	Required Load Date	End of Submission Period
1E (Summer)	August 13, 2021	<b>September 3, 2021</b>	October 1, 2021
2E (Fall)	January 7, 2022	February 4, 2022	March 11, 2022
3E (Winter/Spring)	April 1, 2022	May 6, 2022	June 10, 2022

# 2021-22 Data Reporting Schedule - CBO System

Survey	Required Load Date	Submission Period CLOSES
Survey 11*	July 15, 2021	July 29, 20201
Survey 1	October 14, 2021	October 28, 2021
Survey 2	March 17, 2022	March 24, 2022
Survey 3	July 14, 2022	July 28, 2022

# Integrated Education & Training (IET) Data Reporting

- IET Data Reporting Webinar – 3/1
- 2021-22 supplemental data reporting
- 2022-23 data reporting
  - NEW data element: IET Program Number
  - NEW appendix: IET Program Number
- Measurable Skill Gains (MSG)
  - Postsecondary Courses
  - Industry Certifications

# Resources

## Adult Education Program & Accountability Performance Resources

<https://www.fldoe.org/academics/career-adult-edu/adult-edu/resources.shtml>

- IET Data Reporting Webinar Recording Link
- IET Data Reporting Webinar PowerPoint Presentation
- IET Program Number Appendices
- 21-22 IET Supplemental Data Templates
- Draft 22-23 IET Program Number Data Elements
- IET Program and Reporting FAQs – **COMING SOON!**

# Resources Cont'

Additional detailed guidance on the data reporting of IET programs will be provided at the following convenings:

- ACE of Florida IET Showcase – April 6-8
- Spring WEDDAC meeting – April 27 - 28
- 2022 Career Pathways Institute, IPDAE – May 5-6
- Spring MISATFOR meeting - May
- 2022 ACE Summer Symposium – June 6-7
- 2022 FAMIS 2022 – July 11
- 2022 ACE Annual Conference – October 17 -19

# Grants & Compliance Update

Gloria Spradley-Brown

Bureau Chief

Division of Career and Adult Education





# Grants Administration and Compliance

- **2022-2023 Adult Education Grants**
  - Request for Applications (RFA) posted February 15, 2022
  - Funding Opportunities Webinar March 9, 2022
    - 10:00 a.m. – 12:00 p.m. (EST)
    - 2:00 a.m. – 4:00 p.m. (EST)
    - Applications due May 6, 2022
- **2021-2022 Amendments**
  - DOE 150 and DOE 151 Amendment Forms
  - Upload via OGM ShareFile

# Grants Administration and Compliance

- **Spring 2022 Compliance Monitoring**
  - Virtual and On-Site Monitoring Reviews
  - Compliance document submitted through ShareFile
  - Director has already contracted selected agencies
  - Compliance Training Workshop was held on Thursday, December 9, 2021.
    - Agencies may request the audio recording.
- Questions contact the Compliance Director Kara Kearce at 850-245-9033 or [Kara.Kearce@fldoe.org](mailto:Kara.Kearce@fldoe.org).

# Outreach and Recruitment

Samantha Dunaway  
Director of Outreach and  
Recruitment  
Division of Career and Adult  
Education



# Get There Adult Education Outreach & Recruitment Campaign

- Last year, we ran a month-long advertising campaign targeted at reaching Floridians without a high school diploma or GED. This campaign generated over 31,000 visits to GetThereFL.com which represented an increase of nearly 250% over the previous period.
- Developed an animated video to promote GED® program enrollment in English and Spanish!
- The New Action Toolkit – coming soon!
  - Adult Ed-specific ready-made Email Copy, Newsletter Copy, Social Media Posts, and flyers.

# QUESTIONS?