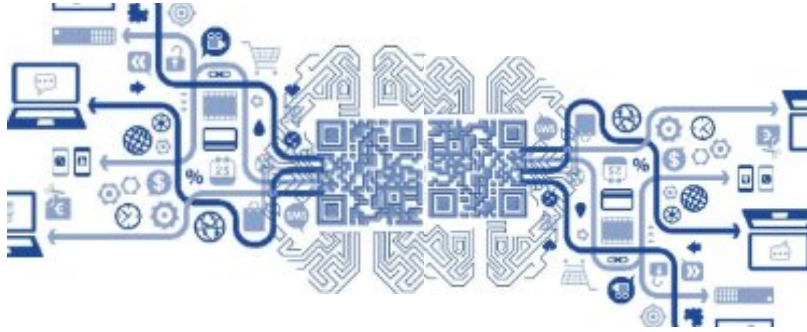


# BEESS WEBSITE MAP



*Links to All Divisions of the Website Can Be Found Below*

- ❖ **Tab on the BEESS Homepage**
  - **Major Division of Tab**
    - **Minor Division of Tab**

[BEESS Main Page: Mission and Topics of Special Interest](#)

- ❖ [BEESS RESOURCE AND INFORMATION CENTER](#)
  - [Individuals with Disabilities Education Act \(IDEA\)](#)
  - [Meetings](#)
  - [Military Families](#)
  - [Parental Consent Form/Prior Written Notice \(fillable forms\)](#)
  - [Publications & Presentations](#)
    - [BEESS Weekly Memo](#)
    - [Presentations](#)
  - [Technical Assistance Papers Memos and Notes](#)
  - [The State Advisory Committee for the Education of Exceptional Students \(SAC\)](#)
- ❖ [DATA & ACCOUNTABILITY](#)
  - [Data & Program Evaluation](#)
  - [LEA Profiles Archive](#)
- ❖ [DISPUTE RESOLUTION](#)

- [Due Process Hearing Orders](#)
  - [2016](#)
  - [2015](#)
  - [2014](#)
  - [2013](#)
  - [2012](#)
  - [2011](#)
  - [2010](#)
  - [2009](#)
  - [2008](#)
  - [2007](#)
- [State Complaints Reports of Inquiry Redacted](#)
  - [2015](#)
  - [2014](#)
  - [2013](#)
  - [2012](#)
  - [2011](#)
  - [2010](#)
  - [2009](#)
  - [2008](#)
  - [2007](#)

#### ❖ [EARLY EDUCATION & PRE-KINDERGARTEN](#)

- [Birth Through Two Years](#)
- [Ages Three Through Five](#)

#### ❖ [ESE ELIGIBILITY](#)

- [Autism Spectrum Disorder \(ASD\)](#)
- [Deaf or Hard-of-Hearing \(DHH\)](#)
- [Developmentally Delayed](#)
- [Dual-Sensory Impairment \(DSI\)](#)
- [Emotional/Behavioral Disability \(E/BD\)](#)
- [Hospital Homebound \(HH\)](#)

- [Intellectual Disabilities \(IND\)](#)
- [Language Impairment \(LI\)](#)
- [Orthopedic Impairment \(OI\)](#)
- [Other Health Impairment \(OHI\)](#)
- [Specific Learning Disabilities \(SLD\)](#)
- [Speech Impairment \(SI\)](#)
- [Traumatic Brain Injury \(TBI\)](#)
- [Visual Impairment \(VI\): Blind & Partly Sighted](#)

❖ [GIFTED EDUCATION](#)

❖ [GRANTS/DISCRETIONARY PROJECTS](#)

❖ [JUVENILE JUSTICE EDUCATION](#)

❖ [MONITORING/ESE POLICIES & PROCEDURES](#)

- [ESE Policies & Procedures \(SP&P\)](#)

❖ [PARENT INFORMATION](#)

- [Disability History & Awareness](#)
- [Exceptional Student Education Parent Survey](#)
- [Parental Consent Form/Prior Written Notice: Student Placement](#)

❖ [RELATED SERVICES](#)

- [Occupational/Physical Therapy \(OT/PT\) as a Related Service](#)

❖ [SECONDARY TRANSITION](#)

❖ [STAFF & DISTRICT CONTACTS](#)

- [Bureau Resource & Information Center Staff \(BRIC\)](#)
- [Dispute Resolution & Monitoring \(DRM\)](#)
- [Instructional Support Services \(ISS\)](#)
- [Program Accountability Assessment & Data Systems \(PAADS\)](#)

- [Statewide ESE Contact Information](#)
- [Student Support Services \(SSS\)](#)

❖ [STATEWIDE ASSESSMENTS \(links to other department web page\)](#)

❖ [STUDENT SUPPORT SERVICES \(links to outside department web page\)](#)

❖ [PROFESSIONAL DEVELOPMENT](#)

❖ [STATEWIDE CONTINUING EDUCATION & INSERVICE](#)