

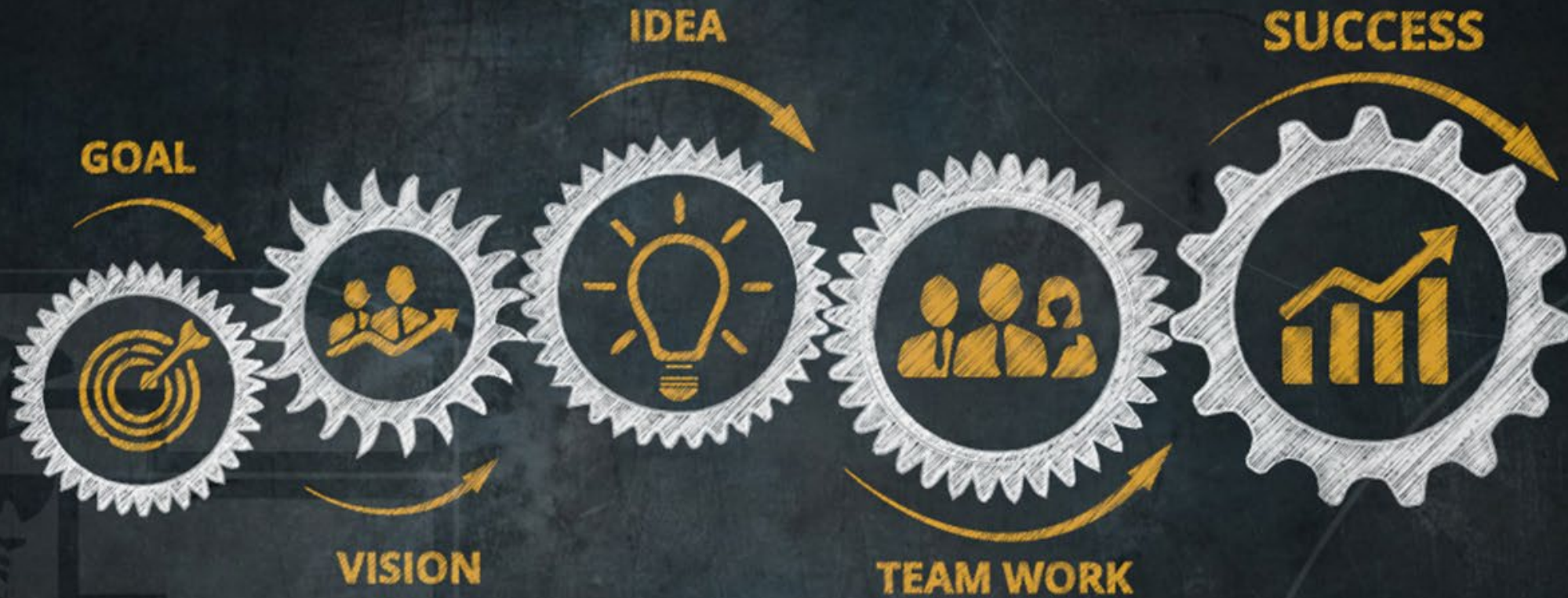


**District-Managed
Turnaround Plans:**
Catalina ES
Pineloch ES
Washington Shores ES

Step 2 (TOP-2)

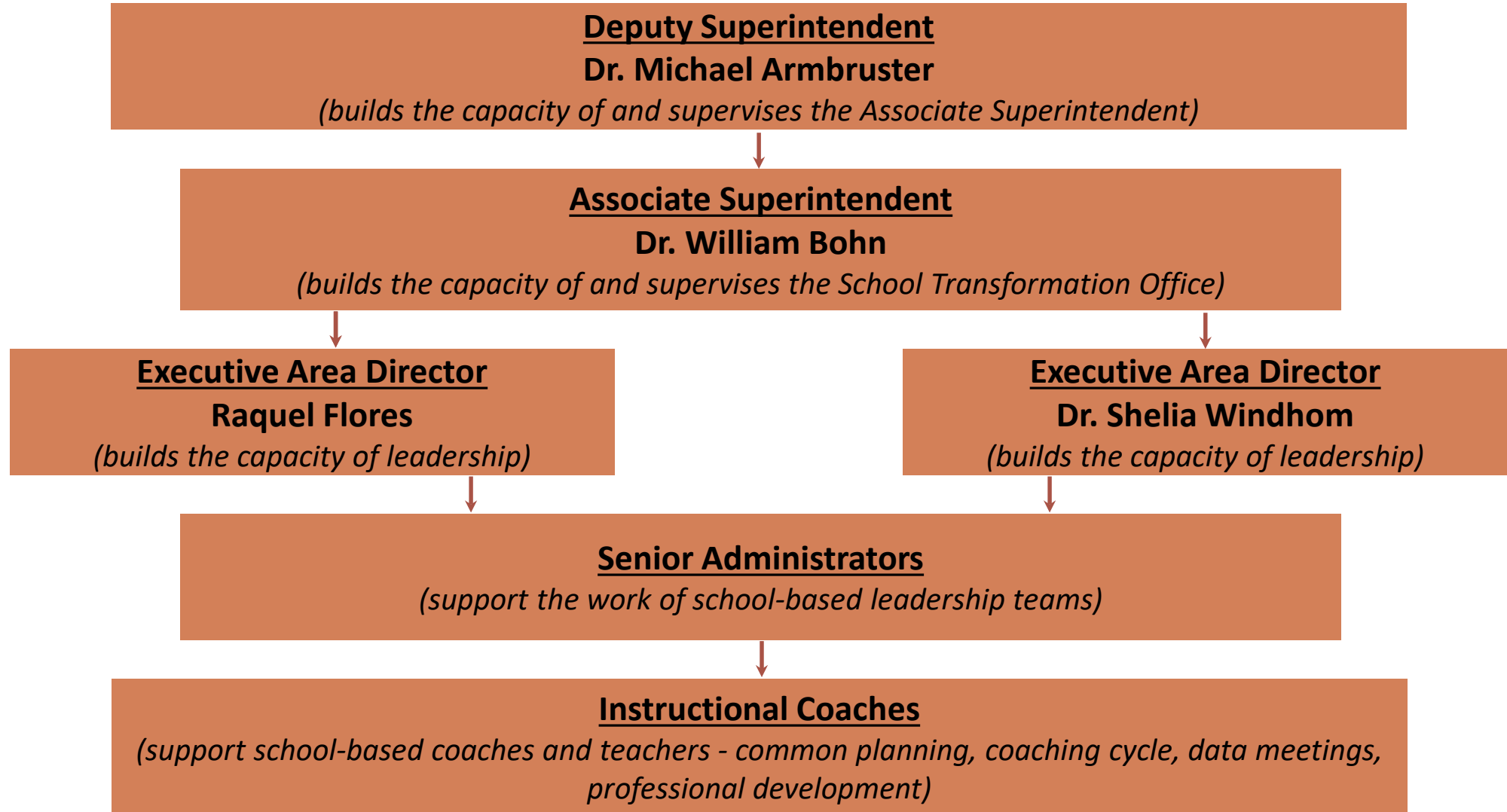
October 20, 2022

School Transformation



Whole school transformation requires a systemic and multifaceted approach to create high academic performance, safe school climates as well as community engagement including family and school personnel with a priority focus on schools

School Transformation Office



School Transformation Data

- **2021-22: 100% of schools supported earned a school letter grade of a C or higher**
- **2020-21: Projected grades no F's**
- **2019-20: No grades**
- **2018-19: 100% of schools earned a school letter grade of C or higher**





School Transformation Office (New Strategies)

- Principal side-by-side coaching focused on results
- Full time senior administrators
- Additional instructional coaches
- Extended hour of reading
- Financial incentives:
 - ✓ Teacher retention and recruitment strategies



School Transformation Office (New Strategies)

- Professional development to implement Benchmarks for Excellent Student Thinking (B.E.S.T.)
- Professional Learning Communities (PLCs) three times per week (e.g., instructional focus, strategies, common assessments, data analysis and action steps)
- Tier 1 interventionists (e.g., co-teaching and student-targeted supports)



School Transformation Office (New Strategies)

- Positive behavior supports
- Guidance counselor, parent engagement liaison, mentorship opportunities
- Social worker and mental health counselor (e.g., wellness checks)



Bureau of School Improvement (BSI)

- Instructional reviews
- Biweekly support visits (e.g. additional instructional focused walks and feedback)
- Standards-based planning, instruction and learning
- Strategic problem solving

Three Targeted Schools



Catalina ES		
AREA	Results of 2022	Goals for 2023
ELA 3+	24	64
MATH 3+	32	62
SCIENCE 3+	25	66
TOTAL		64

Pineloch ES		
AREA	Results of 2022	Goals for 2023
ELA 3+	25	65
MATH 3+	30	60
SCIENCE 3+	25	65
TOTAL		63

Washington Shores ES		
AREA	Results of 2022	Goals for 2023
ELA 3+	28	65
MATH 3+	22	62
SCIENCE 3+	19	60
TOTAL		62

Our Promise. Your Support. Their Success.

Our Promise. Your Support. Their Success.

Our Promise. Your Support. Their Success.

